

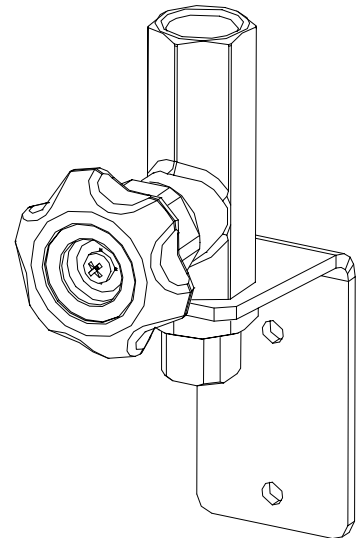
# LOW PRESSURE POINT VALVES

Gascon Systems presents a **new range** of low pressure point valves. They are specifically designed for connection to a gas reticulation system at the point of application where a final system pressure regulator is to be located.

They feature a solid brass gas specific outlet connection and a choice of either a brazing tube inlet nipple or a 1/4" NPT(F) connection into which a Swagelok™ style compression fitting can be fitted. The point valves are fitted with colour coded control knobs.

The point valve is easily mounted to the wall using two 6mm (1/4") screws to secure the robust stainless steel mounting bracket. The standard bracket is designed so that a single stage regulator can be fitted to the point valve. An option of a longer bracket is available if extra clearance from the wall is required, eg. is a dual stage regulator is to be fitted. For applications that require two gases, (eg. oxygen/acetylene or oxygen/LPG for welding), a single common twin point valve mounting bracket can be supplied.

For high purity gas applications the manifold can be chrome plated. If required, inlet compression fittings can be supplied with the G0460 model point valves. Outlet connections other than those listed in the ordering information section can be supplied on request, (eg. CGA or DIN fittings).



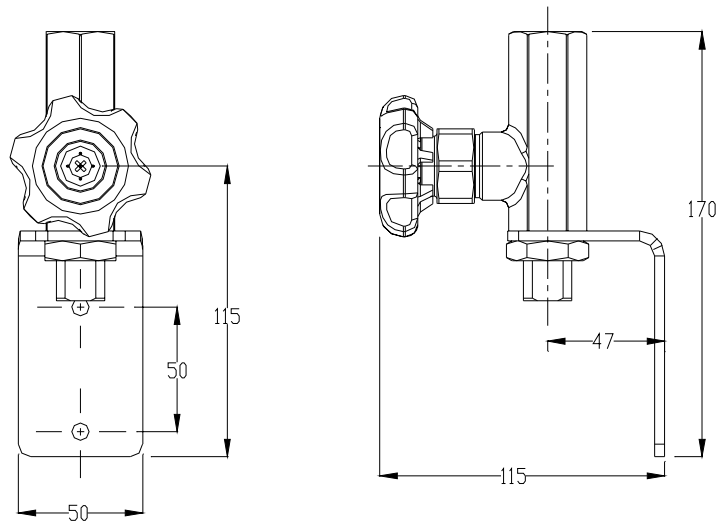
## MATERIALS OF CONSTRUCTION

|                        |                       |
|------------------------|-----------------------|
| Outlet Block:          | Brass                 |
| Isolation Valve Body:  | Brass                 |
| Isolation Valve Seat:  | Nickel Silver/Nylon   |
| Isolation Valve Gland: | PTFE                  |
| Isolate Valve Knobs:   | Flame Retardant Nylon |
| Mounting Bracket:      | Stainless steel       |

## SPECIFICATIONS

|                              |                                                                       |
|------------------------------|-----------------------------------------------------------------------|
| Maximum Inlet Pressure:      | 50 Bar                                                                |
| Inlet Connection:            | 1/2" tube brazing nipple (G0461 models)<br>1/4" NPT(F) (G0460 models) |
| Outlet Connection:           | refer table                                                           |
| Temperature Operating Range: | 0-60° C                                                               |
| Weight:                      | 1.0 kgs                                                               |
| Basic Dimensions:            | 50mm x 115mm x 170mm                                                  |

## BASIC DIMENSIONS



## ORDERING INFORMATION

| Part No                   | Working Gas                | Outlet Fitting  | Inlet Fitting                     | Knob Control |
|---------------------------|----------------------------|-----------------|-----------------------------------|--------------|
| G0460-ACET                | Acetylene                  | Type 20         | 1/4" NPT(F)                       | Red          |
| G0460-AIR                 | Air                        | Type 60         | 1/4" NPT(F)                       | Blue         |
| G0460-CO2                 | Carbon Dioxide             | Type 30         | 1/4" NPT(F)                       | Green Grey   |
| G0460-FUEL                | Fuel & Fuel Gas Mixtures   | Type 20         | 1/4" NPT(F)                       | Red          |
| G0460-INERT <sup>#1</sup> | Inert & Inert Gas Mixtures | Type 10         | 1/4" NPT(F)                       | Blue         |
| G0460-LPG                 | LPG (Propane)              | Type 21         | 1/4" NPT(F)                       | Orange       |
| G0460-N2                  | Nitrogen                   | Type 50         | 1/4" NPT(F)                       | Blue         |
| G0460-N2O                 | Nitrous Oxide              | Type 30         | 1/4" NPT(F)                       | Blue         |
| G0460-OXY                 | Oxygen                     | Type 10         | 1/4" NPT(F)                       | Black        |
| G0461-ACET                | Acetylene                  | Type 20         | 1/2" Brazing Nipple <sup>#2</sup> | Red          |
| G0461-AIR                 | Air                        | Type 60         | 1/2" Brazing Nipple               | Blue         |
| G0461-CO2                 | Carbon Dioxide             | Type 30         | 1/2" Brazing Nipple               | Green Grey   |
| G0461-FUEL                | Fuel & Fuel Gas Mixtures   | Type 20         | 1/2" Brazing Nipple               | Red          |
| G0461-INERT <sup>#1</sup> | Inert & Inert Gas Mixtures | Type 10         | 1/2" Brazing Nipple               | Blue         |
| G0461-LPG                 | LPG (Propane)              | Type 21         | 1/2" Brazing Nipple               | Orange       |
| G0461-N2                  | Nitrogen                   | Type 50         | 1/2" Brazing Nipple               | Blue         |
| G0461-N2O                 | Nitrous Oxide              | Type 30         | 1/2" Brazing Nipple               | Blue         |
| G0461-OXY                 | Oxygen                     | Type 10         | 1/2" Brazing Nipple               | Black        |
| G0464                     | Oxygen/Acetylene           | Type 10/Type 20 | 1/4" NPT(F)                       | Black/Red    |
| G0465                     | Oxygen/LPG                 | Type 10/Type 21 | 1/4" NPT(F)                       | Black/Orange |
| G0462                     | Oxygen/Acetylene           | Type 10/Type 20 | 1/2" Brazing Nipple <sup>#2</sup> | Black/Red    |
| G0463                     | Oxygen/LPG                 | Type 10/Type 21 | 1/2" Brazing Nipple               | Black/Orange |

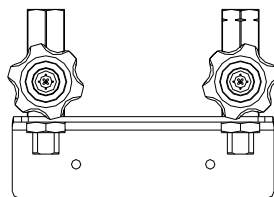
#2 – standard nipples for acetylene are steel, all other gases are brass

- To chrome plate the valve, add a "CHROME" suffix to the above part numbers.
- To have a inlet compression fitting supplied with the valve add the following suffix to the G0460 model (2S = 1/8", 4S = 1/4", 6S = 3/8", 8S = 1/2") unless requested otherwise compression fitting are brass, (except for acetylene model which is supplied with stainless steel fittings)

### ORDERING EXAMPLE

G0460-OXY-8S Oxygen low pressure point valve with 1/2" brass inlet

## SPECIAL OPTIONS



Twin Mount Plate Models

**GASCON**  
SYSTEMS